

Face

gdong pa

발음

얼굴

གདོང་པ།

[동바]

[dong pa]



Tibetan

티벳인

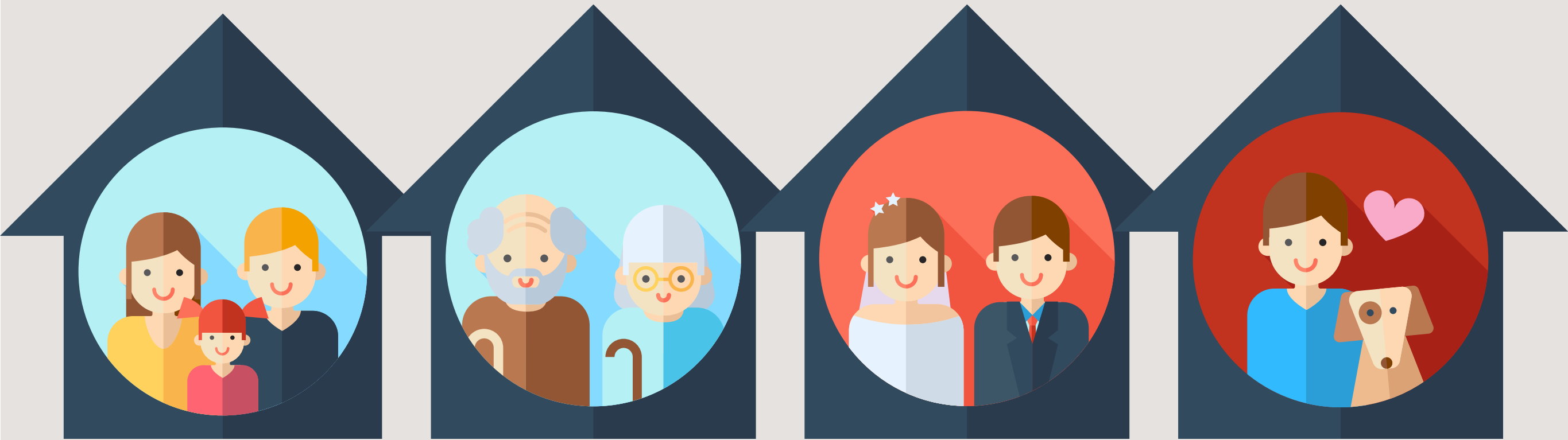
bod pa

བོད་པ།

발음

[뵘뵘]

[bö pa]



Family

가족

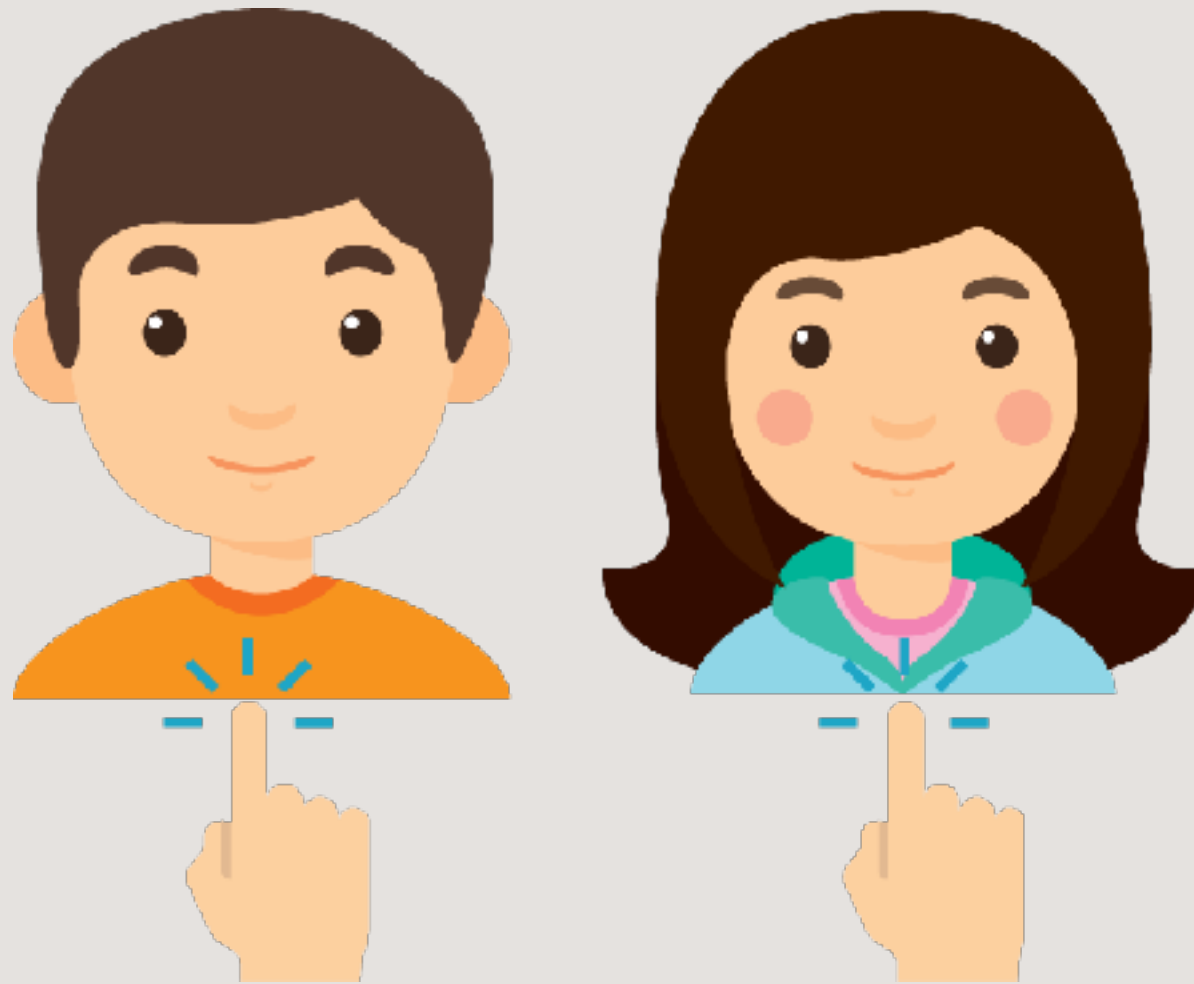
nang mi

ནང་མི།

발음

[낭미]

[nang mi]



I, My

nga | nga'i

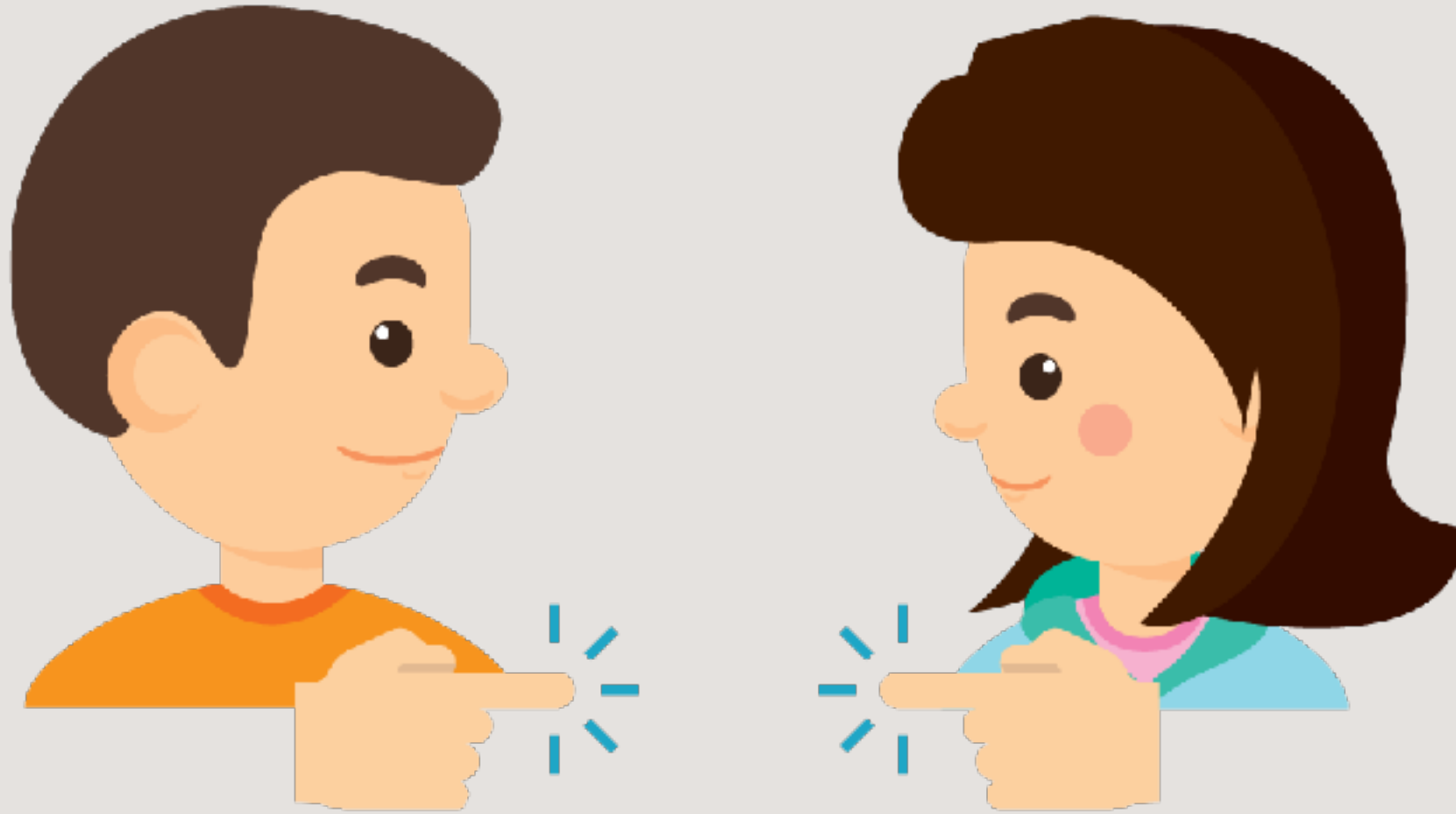
발음

나, 나의

ང་ ང་ཡི་

[(응)아] | [(응)예]

[nga] | [ngé]



You

khyed rang

발음

당신

ཁྱེད་རང་།

[케랑]

[khyé rang]



School

slob grwa

발음

학교

ལྷོབ་གྲོ་

[롭다]

[lob dra]



Student

slob phrug

발음

학생

སློབ་ཕྱོགས་

[롭톡]

[lop truk]



Freedom

rang dbang

받음

자유

རང་དབང་།

[랑왕(라왕)]

[rang wang]



Water

chu

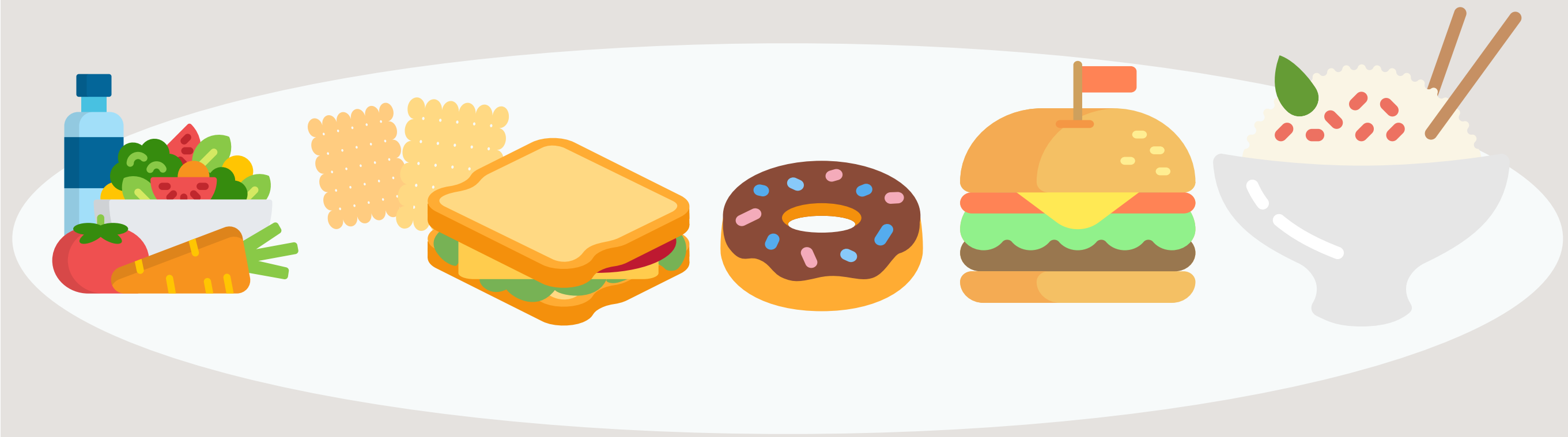
འཕུམ

འཕུམ

འཕུམ

[추]

[chu]



Food

kha lag

발음

음식

ཁ་ལག

[카락]

[kha lak]



Buddha

sangs rgyas

발음

붓다

སངས་རྒྱལ་

[쌍개]

[sang gyé]



Dharma

법

chos

ཚོས།

발음

[채]

[chö]



Sangha

승가

dge 'dun

དགེ་འདུན།

발음

[겐둔]

[gen dün]



Rain

char pa

발음

비

ཆར་པ།

[차르빠]

[char pa]



Cloud

구름

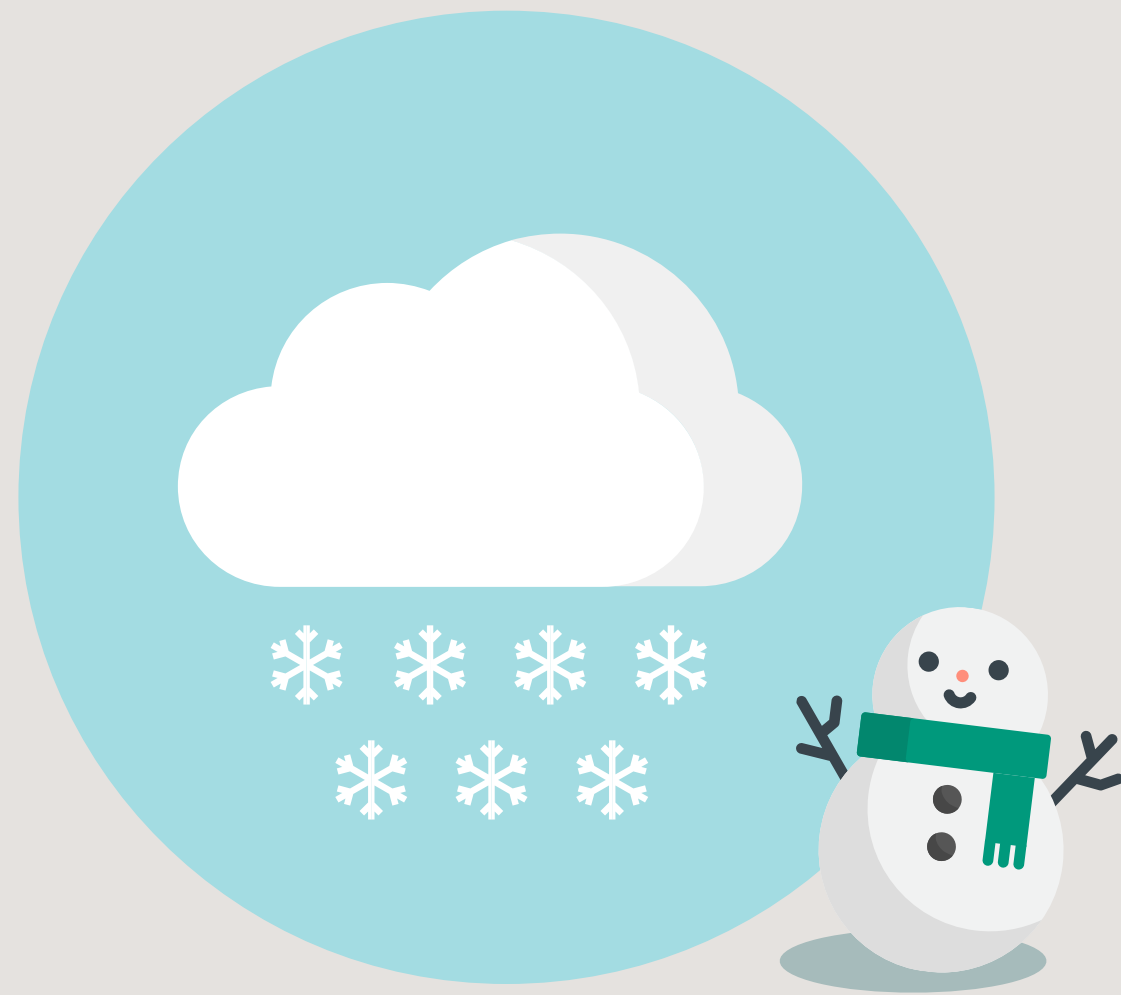
sprin pa

མྱེན་པ།

발음

[띠ン바]

[trin pa]



Snow

gangs

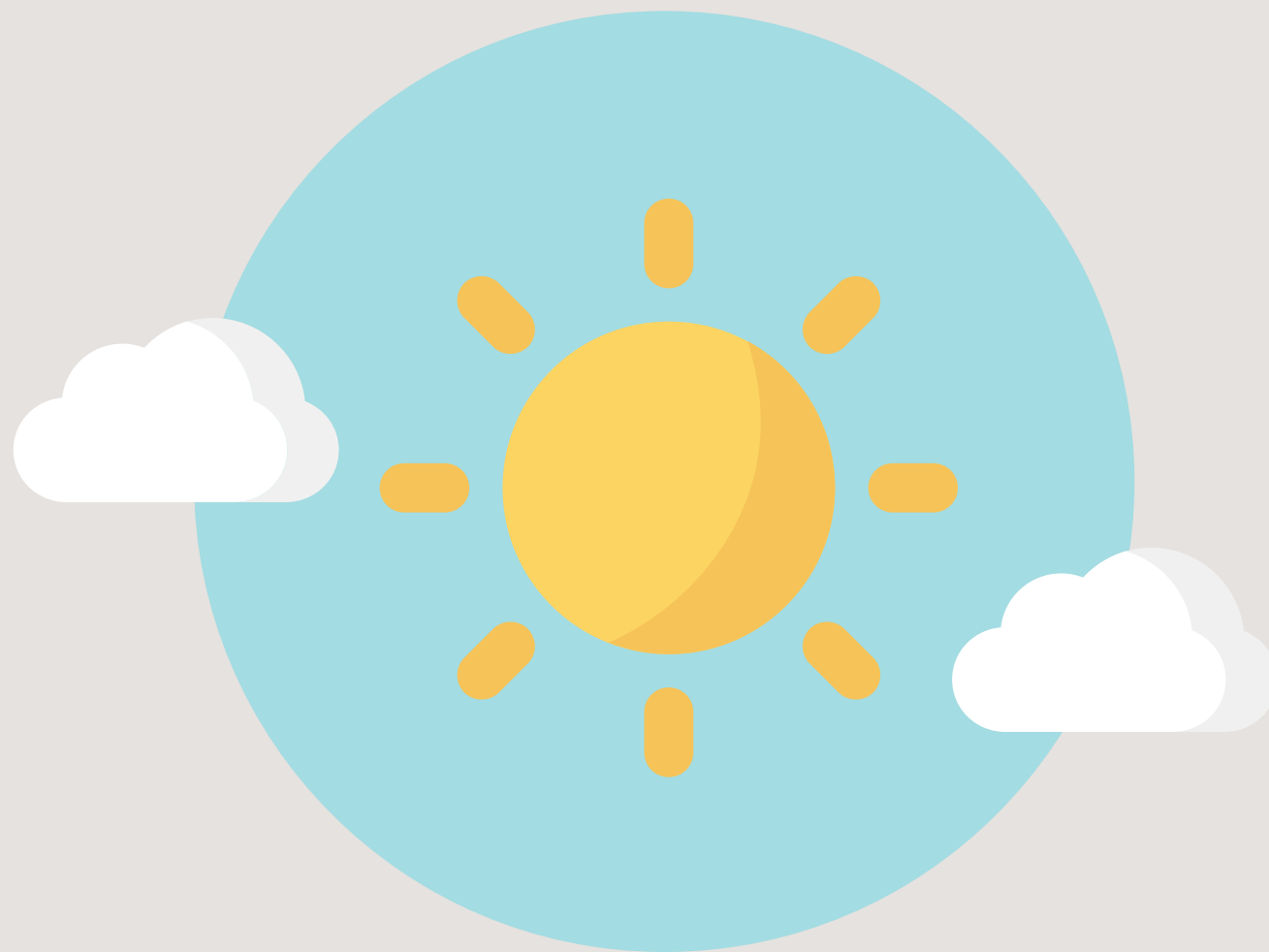
발음

눈

གངས་

[강]

[gang]



Sun

해

nyi ma

ནི་མ།

받음

[니마]

[nyi ma]



Moon

zla ba

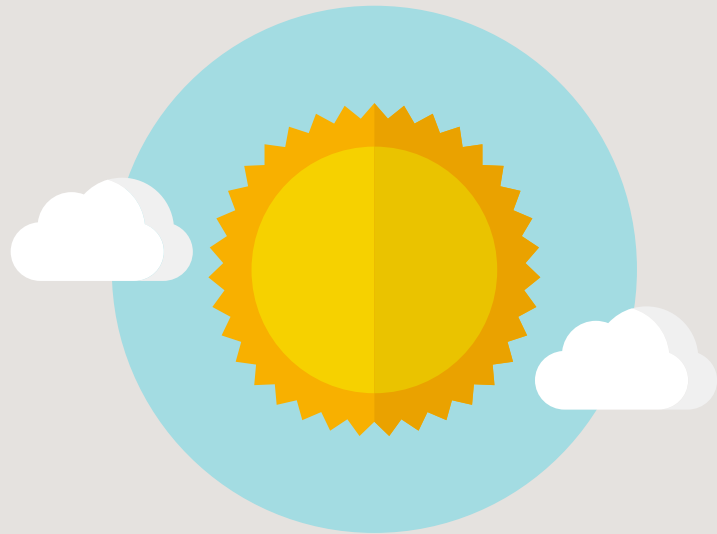
달음

달

ལྷ་བ།

[다와]

[da wa]



Weather

gnam gshis

발음

날씨

གནམ་གཤིས།

[날씨]

[nam shi]